

WARREN CATALOGUE

Guardian with Love, Quietness Creates Comfort

China Warren Windows and Doors Co., Ltd.

Tel: +86-13811929303
Email: sales@warrenwindow.com



Website: www.warrenwindow.com; www.warrenwd.com

Add. 1: No. 7-2, Gongye Avenue, Songxia Ind. Park, Shishan Town, Foshan, Guangdong Pro.
Add. 2: Zone B, Central Europe Ind. Park, Linqu County, Weifang City, Shandong Pro.



CONTENTS

01

About us

02

Solution

03

Color

04

Procurement Process

05

Inspection, Packing and Delivery

ABOUT US

WAREN 沃伦

办公楼

办公楼





WHO IS WARREN

Since its founding in 2012, Warren Windows, located in Beijing, China, has been determined to bring guardians for many homeowners by providing quality aluminum windows and doors in standard sizes and customized sizes. Warren windows takes technique and workmanship and quality seriously. Instead of applying traditional manpower in our factories, we have introduced a few German Elumatec Automatic Processing machines to make our manufacturing more precise and effective.

COMPANY PROFILE

In the past ten years, Warren windows keep pushing itself to pursue more delicate products for every customer by observing the newest technique and designs while always remaining professional service. You can see many stores selling Warren products in many cities across China and we have also done many excellent projects for customers from other countries. Our products have received many favors from over 350, 000 families. But we are not yet satisfied with that progress. We were working on, are working on, and will continue working on improved quality and better budget for our customers.

elumatec



Why You Can Trust Warren?

The Warren Difference

1

Exceptional Craftsmanship

WARREN is committed to offering a more attractive design solution to our customers with exceptional craftsmanship. Our products equipped with superior performance and exquisite design. All in all, WARREN has never stopped on the way of exploration and innovation.

2

Top Configuration

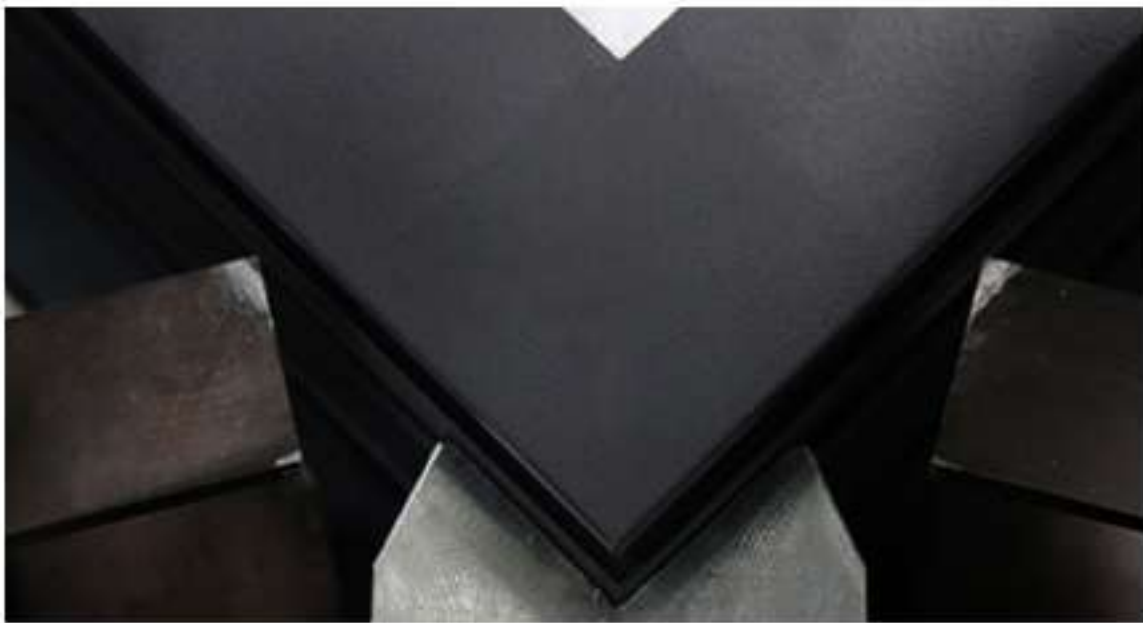
WARREN are caution about selecting high-end materials for its products. We well select the best raw materials and bring in advanced equipment and exquisite workmanship by cooperating with outstanding brand from all over the world.

3

Lifetime Limited Warranty

WARREN is committed to top quality, excellent performance and high standard. That why we can keep all of our windows and doors with a limited lifetime warranty.

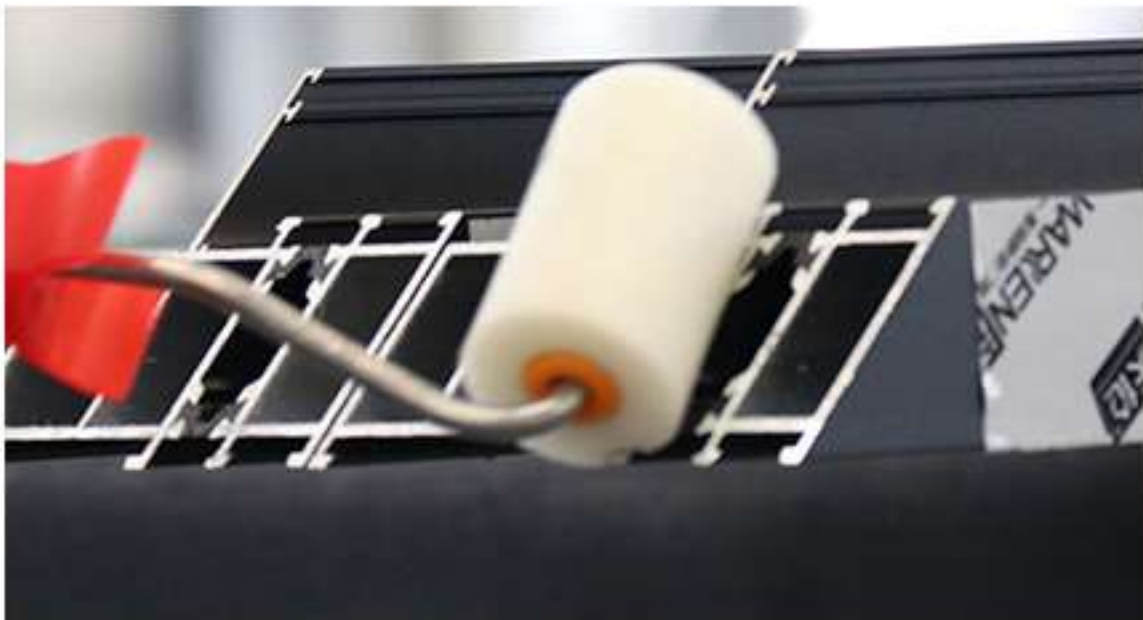
1.Exceptional Craftsmanship



Perfect Mitre Cut
And Mitre Joint



Strong Aluminum
Assemble Corner Key



Corner Section Glue
(Strengthen the sealing
of windows)



Injection Method for Corner
Angle Bonding:
German Weiss Cosmofen Duo



Reinforced Window Corners



Precise Flatness of Frame

2.Top Configuration

1.6 Million Sq.ft
Production Bases



Annual output over
10 Million Sq.ft



600+
Full-time Staff in Warren



Italy FOM Industrie
Profile Cutting Area



Gema Switzerland
Powder Coating Area



6 German Elumatec
Automatic Processing
Production Line

elumatec



Micron-level processing; Combine drilling, cutting, milling, and sawing,
multiple functions in one machine

WARREN' S COOPERATION WITH WORLDWIDE SUPPLIERS

elumatec

German Manufacturing
Equipment

Sobinco
OPENS YOUR LIFE

Belgium Hardware

SIEGENIA
brings spaces to life

German Hardware

HOPPE 
好博

German Hardware

Dr. Hahn
TÜRBÄNDER. MADE IN GERMANY.

German Hardware

TECHNOFORM
泰诺风

German Sealing Strip

Haída

Chinese Hardware

FSB

German Hardware

FUHR

German Hardware

PICC
中国人保

The People's Insurance
Company of China

ISEO®

Italian Smart Locking System

Roto

German Hardware

CMECH

American Hardware

SEMPERIT 

German Sealing Strip

Ensinger 

德国•恩信格（隔热条）

weiss

German Adhesive Sealant

HANS
汉狮®

Chinese Brand Blinds


AkzoNobel
Tomorrow's Answers Today

Holland Brand Power
Coating Finishing

3.Lifetime Limited Warranty

Your home deserves the best, and so do you. That's why we offer a lifetime limited warranty with our windows - because we believe in providing only the highest quality products and service. Trust us to deliver windows that not only look great and function excellently, but that are also backed by a lifetime warranty for your peace of mind. Your satisfaction is our top priority, and our lifetime warranty is just one way we demonstrate that commitment



Why Choose Energy-saving Aluminum Doors and Windows?

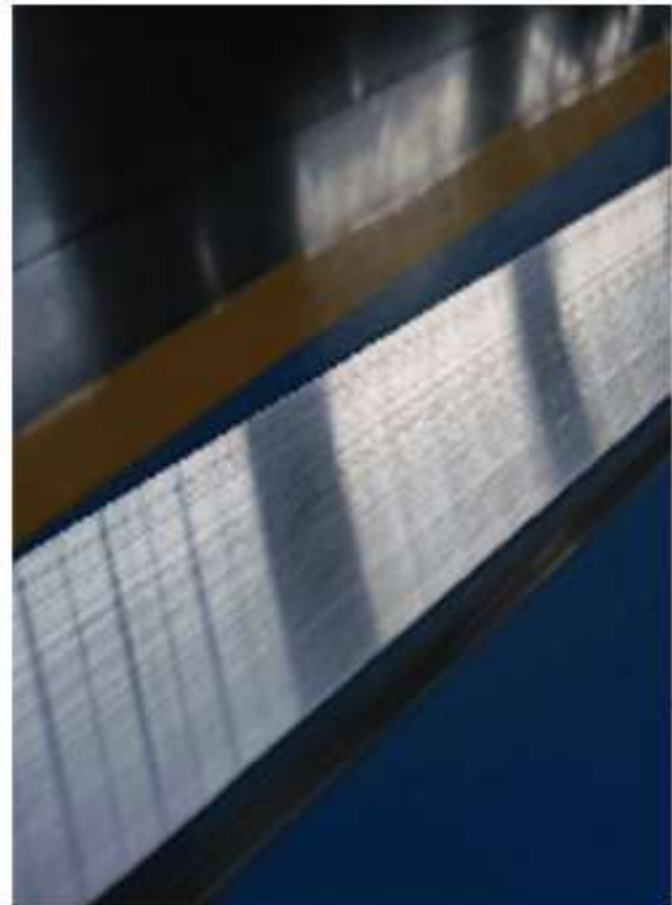
1.Highest Quality

Adopt 6060-T66 ultra-high precision grade aluminum alloy, high strength, and no deformation, extending the life of windows and doors

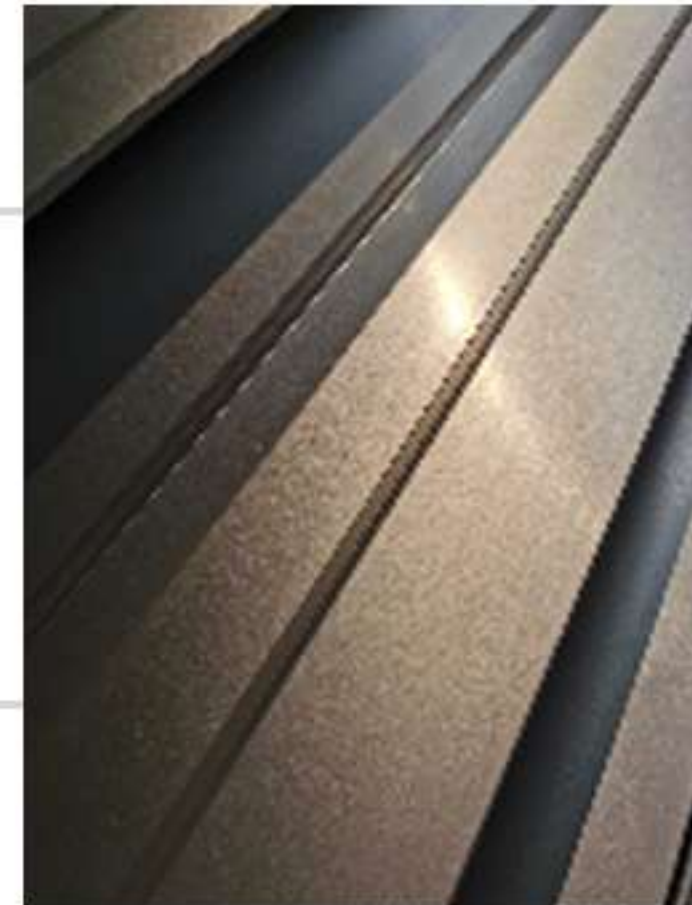
Material	6060-T66	6063-T5
Tensile Strength(σ_b)	$\geq 215\text{Mpa}$	$\geq 160\text{Mpa}$
Yield Strength($\sigma_{0.2}$)	$\geq 160\text{Mpa}$	$\geq 110\text{Mpa}$

increase 34.4%

increase 45.5%



VS



Profile surface treatment - sandblasting process, making the profile surface more flat and clean, increasing the adhesion of electrostatic spraying powder, making the surface more corrosion resistant and environmentally friendly



Netherlands AkzoNobel Powder-Large international brands, reliable quality. 20 years no discoloration, no lumping, no paint loss

Why Choose Energy-saving Aluminum Doors and Windows?

2.High Energy Efficiency

Sealing Performance---Central Gasket

#German Excellent Brand Semperit#

- Top Grade EPDM Rubber, delivering excellent tear, abrasion and steam resistance
- One-piece Bending (no breaks in the corner), improving Airtightness performance
- Co-extruded gaskets with foam rubber area for top insulation performance

#China Jiangyin Haida#

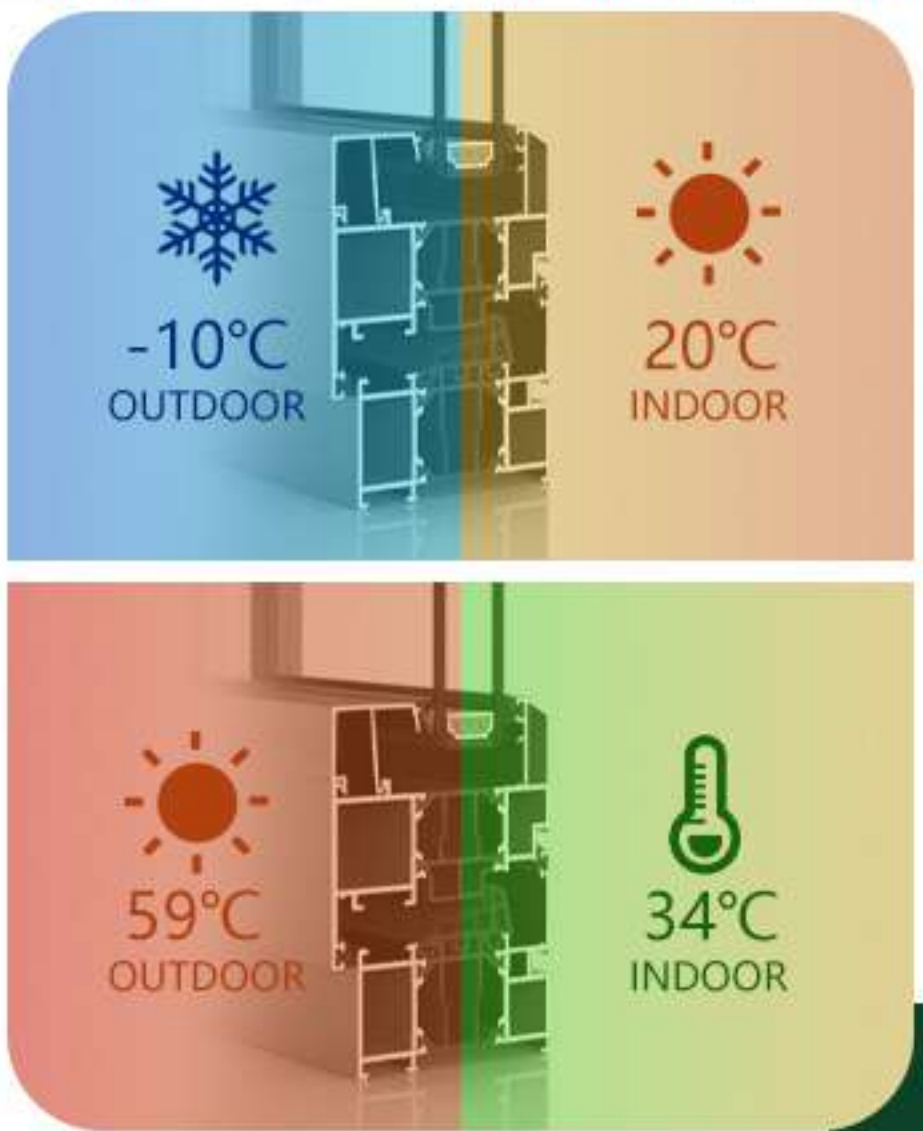
- Advanced EPDM Rubber,delivering excellent tear, abrasion and steam resistance
 - Hot Melt Welding (4 Joints Each), Original JYHD EPDM Integrated
- >fastness
>Acoustic Performance
>Heat Insulation Performance

Insulation Performance---Thermal Break

#High Quality Warren Brand# & #German Technoform Brand#

The material is Glass Fiber Reinforced PA66 GF25 , which fits perfectly with the physical expansion properties of aluminum. Optimal width(24/34mm), thus improving the insulation factor of the aluminum.

Aluminum Remains Constant Temperature



Why Choose Energy-saving Aluminum Doors and Windows?

3.The Aesthetic

- Aluminum windows can have a sleek and modern aesthetic that is popular in many contemporary architectural designs. The material's inherent strength and durability allow for thinner frames, which can create a more minimalist look and provide a larger glass area for increased natural light.

The aluminum frames can be finished in a variety of colors, including metallic and matte finishes,

- which can add to their aesthetic appeal. Additionally, they can be custom-designed to fit specific architectural styles.

Checking our catalogue to see the different design, just like Flush Design, Slim Frame Design,

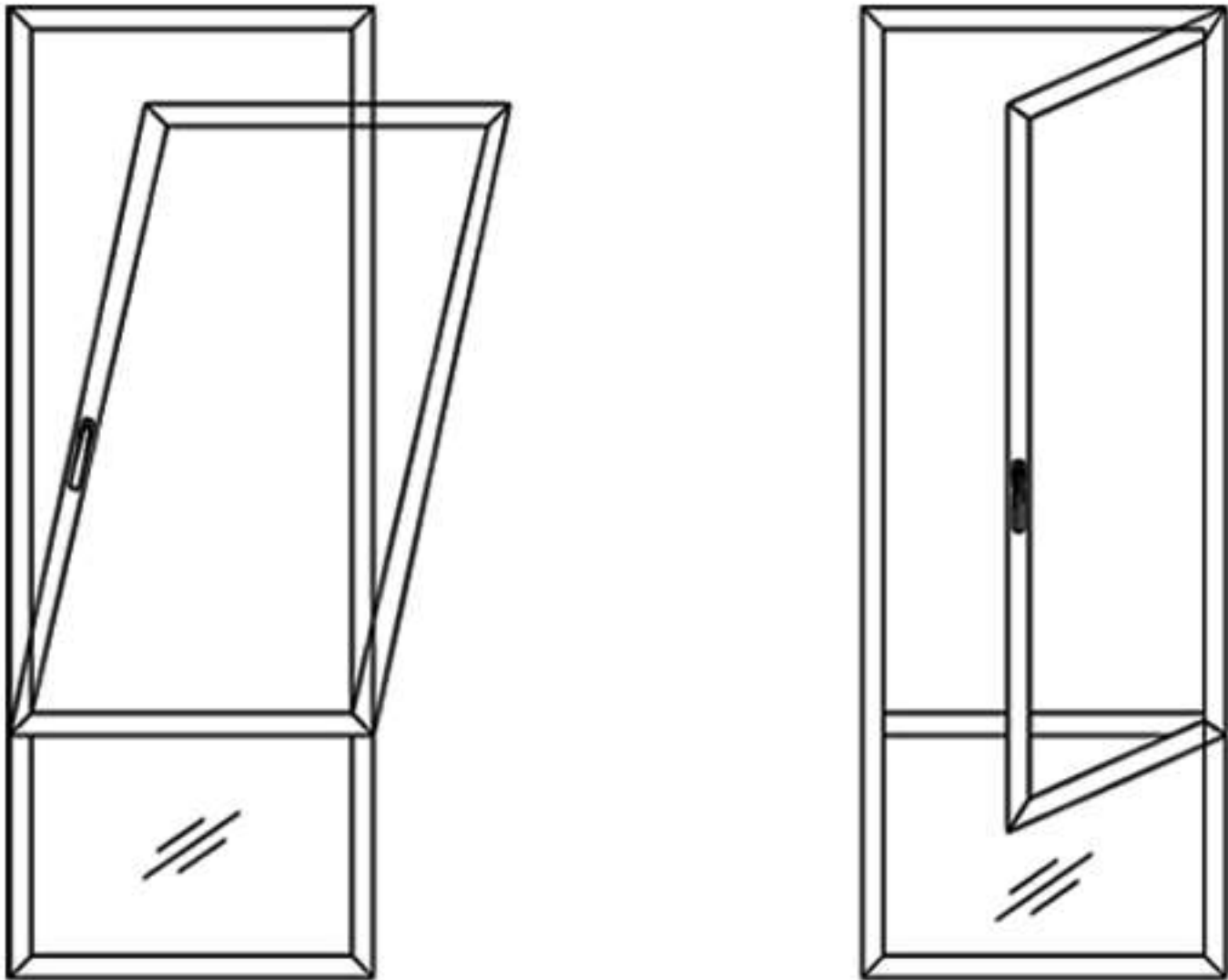
- Large View Solution, you can choose from when building your home. All in all, they will be able to align well with your vision.



What is the best Energy-saving of opening way? ——— **Tilt and Turn**

1.What is Tilt and Turn?

Tilt and Turn Windows can open inward just like inswing window and tilt on the top to allow flexible ventilation. Tilt and Turn Windows promise better quality and superior Energy-efficiency and exceptional durability with unique design and functionality.



2. Why Tilt and Turn?



- 1.Flexibility:** The ability to open the window in two different ways provides flexibility in controlling the airflow and access to the outside.
- 2.Improved ventilation:** The tilt position allows for easy ventilation, which can help improve indoor air quality and reduce the need for artificial cooling.
- 3.Easy cleaning:** The tilt position allows for easy cleaning of the exterior of the window from inside the room.
- 4.Improved security:** The turn position allows for the window to be closed tightly and securely, providing added security for your home.
- 5.Space-saving:** Tilt and turn windows are designed to take up less space when opened, making them ideal for small or tight spaces.
- 6.Contemporary design:** The sleek and modern design of tilt and turn windows adds a contemporary touch to any home.

Overall, tilt and turn windows offer a range of benefits including improved ventilation, easy cleaning, improved security, space-saving design, and a contemporary look.

SOLUTION





WINDOW SYSTEM

A home also can be a place where your heart lives and coming home is coming to your heart.

Well-designed amazing windows and doors are all Warren want to bring to every customer.



Cold Climate Solution

Cold climate solutions are designed to provide superior thermal insulation, which can help reduce energy costs by keeping the heat inside during the winter months. This can result in lower heating bills and a more comfortable indoor environment.



Engineer Series



- Glass:** Fully Tempered
Triple Glazing (5+12A+5+12A+5)
Energy Efficient Low-E Coating
- Profile:** High Strength 6060-T66
- Normal Thickness of Supportive Profile:** 1.4~1.8mm
- Thermal Break:** PA66 GF25 34mm
- Gasket:** China Brand JIANGYIN HAIDA
- Energy Performance Ratings:**
- U-Factor(U.S./I-P) ---0.23-0.38
 - Solar Heat Gain Coefficient ---0.17-0.38
 - Visible Transmittance ---0.29-0.49
 - Air Leakage(U.S.1/I-P) ---≤0.3
 - Condensation Resistance ---40-60
- Price:** ☆ ☆
- Hardware:** German Excellent Brand ROTO
- Handle:** German Excellent Brand HOPPE
- Open Type:** Tilt and Turn/Inswing/Hopper
- Key Point:** Economy, Durability, Energy Efficient

***Optional cavity perfusion and insulation cotton double upgrade the heat insulation performance



Master Series



- Glass:** Fully Tempered
Triple Glazing (5+12A+5+12A+5)
Energy Efficient Low-E Coating
- Profile:** High Strength 6060-T66
- Normal Thickness of Supportive Profile:** 1.8~2.2mm
- Thermal Break:** PA66 GF25 34mm
- Gasket:** German Brand SEMPERIT
- Energy Performance Ratings:**
- U-Factor(U.S./I-P) ---0.23-0.38
 - Solar Heat Gain Coefficient ---0.17-0.38
 - Visible Transmittance ---0.29-0.49
 - Air Leakage(U.S.1/I-P) ---≤0.3
 - Condensation Resistance ---40-60
- Price:** ☆ ☆ ☆
- Hardware:** German Top Brand ROTO
- Plug-in Handle:** German Luxury Brand FSB
- Upgrade Option:** German Luxury Brand SOBINCO Hardware and Handle
- Open Type:** Tilt and Turn/Inswing/Hopper
- Key Point:** Classic, Economy, Durability, Energy Efficient

***Optional cavity perfusion and insulation cotton double upgrade the heat insulation performance



Slim Series



Glass: Fully Tempered

Triple Glazing(5+18A+5)

Energy Efficient Low-E Coating

Profile: High Strength 6060-T66

Normal Thickness of Supportive Profile: 1.8~5.3mm

Thermal Break: PA66 GF25, Frame 24mm, Sash 35.5mm

Gasket: China Brand JIANGYIN HAIDA

Energy Performance Ratings:

- U-Factor(U.S./I-P) ---0.23-0.38
- Solar Heat Gain Coefficient ---0.17-0.38
- Visible Transmittance ---0.29-0.49
- Air Leakage(U.S./I-P) ---≤0.3
- Condensation Resistance ---40-60

Price: ☆ ☆ ☆ ☆

Hardware: German Excellent Brand ROTO

Handle: German Luxury Brand FSB

Upgrade Option: German Luxury Brand SOBINCO Hardware and Handle

Open Type: Tilt and Turn/Inswing/Hopper

Key Point: Flush, Narrow Frame, Aesthetically Pleasing Design, Energy Efficient

***Optional cavity perfusion and insulation cotton double upgrade the heat insulation performance



Energy Ultimate Series



Glass: Fully Tempered

Triple Glazing(5+12A+5+12A+5)

Energy Efficient Low-E Coating

Profile: High Strength 6060-T66

Normal Thickness of Supportive Profile: 1.8~2.2mm

Thermal Break: PA66 GF25 44mm

Gasket: German Brand SEMPERIT

Energy Performance Ratings:

- U-Factor(U.S./I-P) ---0.23-0.38
- Solar Heat Gain Coefficient ---0.17-0.38
- Visible Transmittance ---0.29-0.49
- Air Leakage(U.S./I-P) ---≤0.3
- Condensation Resistance ---40-60

Price: ☆ ☆ ☆ ☆

Hardware & Plug-in Handle: German Luxury Brand SOBINCO

Upgrade Option: German Luxury Brand SOBINCO Hardware and FSB Handle

Open Type: Tilt and Turn/Inswing/Hopper

Key Point: Key Excellent Thermal Insulation, Energy Efficient, Anti-Mosquito

***Optional cavity perfusion and insulation cotton double upgrade the heat insulation performance



Energy Series

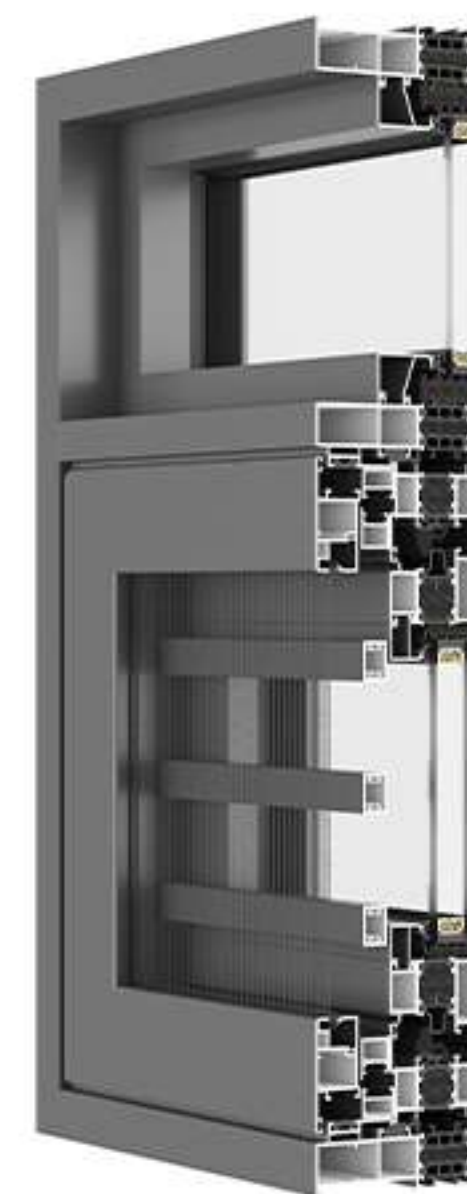


- Glass:** Fully Tempered
Triple Glazing(5+12A+5+12A+5)
Energy Efficient Low-E Coating
- Profile:** High Strength 6060-T66
- Normal Thickness of Supportive Profile:** 1.8~2.2mm
- Thermal Break:** PA66 GF25 34mm
- Gasket:** German Brand SEMPERIT
- Energy Performance Ratings:**
- U-Factor(U.S./I-P) ---0.23-0.38
 - Solar Heat Gain Coefficient ---0.17-0.38
 - Visible Transmittance ---0.29-0.49
 - Air Leakage(U.S.1/I-P) ---≤0.3
 - Condensation Resistance ---40-60
- Price:** ☆ ☆ ☆
- Hardware:** German Excellent Brand ROTO
- Handle:** German Luxury Brand FSB
- Upgrade Option:** German Luxury Brand SOBINCO Hardware and Handle
- Open Type:** Tilt and Turn/Inswing/Hopper
- Key Point:** Flush, Aesthetically Pleasing Design, Energy Efficient, Anti-Mosquito

***Optional cavity perfusion and insulation cotton double upgrade the heat insulation performance



Master Plus Flush Series



- Glass:** Fully Tempered
Triple Glazing(5+12A+5+12A+5)
Energy Efficient Low-E Coating
- Profile:** High Strength 6060-T66
- Normal Thickness of Supportive Profile:** 1.8~2.2mm
- Thermal Break:** PA66 GF25 34mm
- Gasket:** German Brand SEMPERIT
- Energy Performance Ratings:**
- U-Factor(U.S./I-P) ---0.23-0.38
 - Solar Heat Gain Coefficient ---0.17-0.38
 - Visible Transmittance ---0.29-0.49
 - Air Leakage(U.S.1/I-P) ---≤0.3
 - Condensation Resistance ---40-60
- Price:** ☆ ☆ ☆
- Hardware:** German Excellent Brand ROTO
- Plug-in Handle:** German Luxury Brand FSB
- Upgrade Option:** German Luxury Brand SOBINCO Hardware and Handle
- Open Type:** Tilt and Turn/Inswing/Hopper
- Key Point:** Flush, Aesthetically Pleasing Design, Energy Efficient, Anti-Mosquito

***Optional cavity perfusion and insulation cotton double upgrade the heat insulation performance



Push Out Series



Glass: Fully Tempered

Triple Glazing(5+12A+5+12A+5)

Energy Efficient Low-E Coating Glass

Profile: High Strength 6060-T66

Normal Thickness of Supportive Profile: 1.8~2.2mm

Thermal Break: PA66 GF25 34mm

Gasket: German Brand SEMPERIT

Energy Performance Ratings:

- U-Factor(U.S./I-P) ---0.23-0.38
- Solar Heat Gain Coefficient ---0.17-0.38
- Visible Transmittance ---0.29-0.49
- Air Leakage(U.S.1/I-P) ---≤0.3
- Condensation Resistance ---40-60

Price: ☆ ☆ ☆

Upgrade Hardware and Handle: German Luxury Brand SOBINCO

Open Type: Out-Swing/Awning/ Out-Swing & Awning

Key Point: Classic, Economy, Durability, Energy Efficient, Corrosion Resistance, Hurricane Resistance

***Optional cavity perfusion and insulation cotton double upgrade the heat insulation performance



Push Out Plus Casement Screen Series



Glass: Fully Tempered

Double Glazing (5+18A+5)

Energy Efficient Low-E Coating

Profile: Highly-Precise 6063-T5

Normal Thickness of Supportive Profile: 1.8~2.0mm

Thermal Break: PA66 GF25 Frame 24mm, Sash 14.8mm

Gasket: China Brand JIANGYIN HAIDA

Energy Performance Ratings:

- U-Factor(U.S./I-P) ---0.23-0.38
- Solar Heat Gain Coefficient ---0.17-0.38
- Visible Transmittance ---0.29-0.49
- Air Leakage(U.S.1/I-P) ---≤0.3
- Condensation Resistance ---40-60

Price: ☆ ☆ ☆ ☆

Hardware: Top Brand Wehag

Plug-in Handle: Top Brand Wehag

Open Type: Awning/Out-Swing

Key Point: Flush, Aesthetically Pleasing Design, Energy Efficient, Anti-Mosquito

***Optional cavity perfusion and insulation cotton double upgrade the heat insulation performance



Wider View Micro Ventilation #B

Glass: Fully Tempered
Triple Glazing(5+12A+5+12A+5)
Energy Efficient Low-E Coating

Profile: High Strength 6060-T66

Normal Thickness of Supportive Profile: 1.8~2.2mm

Thermal Break: PA66 GF25 34mm

Gasket: German Brand SEMPERIT

Energy Performance Ratings:

- U-Factor(U.S./I-P) ---0.23-0.38
- Solar Heat Gain Coefficient ---0.17-0.38
- Visible Transmittance ---0.29-0.49
- Air Leakage(U.S.1/I-P) ---≤0.3
- Condensation Resistance ---40-60

Price: ☆ ☆ ☆ ☆

Hardware & Plug-in Handle: German Luxury Brand SOBINCO

Upgrade Option: German Luxury Brand SOBINCO Hardware and FSB Handle

Open Type: Minor Ventilation

Key Point: Durability, Energy Efficient, Micro-ventilation, Large View

***Optional cavity perfusion and insulation cotton double upgrade the heat insulation performance



Wider View Micro Ventilation #D

Glass: Fully Tempered
Triple Glazing(5+12A+5+12A+5)
Energy Efficient Low-E Coating

Profile: High Strength 6060-T66

Normal Thickness of Supportive Profile: 1.8~2.2mm

Thermal Break: PA66 GF25 34mm

Gasket: German Brand SEMPERIT

Energy Performance Ratings:

- U-Factor(U.S./I-P) ---0.23-0.38
- Solar Heat Gain Coefficient ---0.17-0.38
- Visible Transmittance ---0.29-0.49
- Air Leakage(U.S.1/I-P) ---≤0.3
- Condensation Resistance ---40-60

Price: ☆ ☆ ☆ ☆

Hardware & Plug-in Handle: German Luxury Brand SOBINCO

Upgrade Option: German Luxury Brand SOBINCO Hardware and FSB Handle

Open Type: Minor Ventilation

Key Point: Durability, Energy Efficient, Micro-ventilation, Large View

***Optional cavity perfusion and insulation cotton double upgrade the heat insulation performance





Passive Series



Glass: Fully Tempered

Triple Glazing (5+12A+5+12A+5)

Energy Efficient Low-E Coating Glass

Profile: High Strength 6060-T66

Normal Thickness of Supportive Profile: 1.8~2.2mm

Thermal Break: PA66 GF25 44mm

Gasket: German Brand SEMPERIT

Energy Performance Ratings:

- U-Factor(U.S./I-P) ---0.23-0.36
- Solar Heat Gain Coefficient ---0.17-0.38
- Visible Transmittance ---0.29-0.49
- Air Leakage(U.S.1/I-P) ---≤0.3
- Condensation Resistance ---40-60

Price: ☆ ☆ ☆ ☆ ☆

Upgrade Hardware and Handle: German Luxury Brand SOBINCO

Open Type: Out-Swing/Awning/Out-Swing & Awning

Key Point: Classic, Economy, Durability, Energy Efficient,
Corrosion Resistance,Hurricane Resistance

***Optional cavity perfusion and insulation cotton double
upgrade the heat insulation performance





Hot Climate Solution

Using a hot climate solution for windows can help to improve the energy efficiency, comfort, and protection of your home, while also providing privacy and contributing to a more sustainable future.



Engineer Series



Glass: Fully Tempered
Triple Glazing(5+18A+5)
Energy Efficient Low-E Coating

Profile: High Strength 6060-T66

Normal Thickness of Supportive Profile: 1.4~1.8mm

Thermal Break: PA66 GF25 34mm

Gasket: China Brand JIANGYIN HAIDA

Energy Performance Ratings:

- U-Factor(U.S./I-P) ---0.23-0.38
- Solar Heat Gain Coefficient ---0.17-0.38
- Visible Transmittance ---0.29-0.49
- Air Leakage(U.S./I-P) ---≤0.3
- Condensation Resistance ---40-60

Price: ☆ ☆

Hardware: German Excellent Brand ROTO

Handle: German Excellent Brand HOPPE

Open Type: Tilt and Turn/Inswing/Hopper

Key Point: Economy, Durability, Energy Efficient

***Optional cavity perfusion and insulation cotton double upgrade the heat insulation performance



Architect Series



Glass: Fully Tempered
Triple Glazing(5+18A+5)
Energy Efficient Low-E Coating

Profile: High Strength 6060-T66

Normal Thickness of Supportive Profile: 1.8~2.2mm

Thermal Break: PA66 GF25 24mm

Gasket: German Brand SEMPERIT

Energy Performance Ratings:

- U-Factor(U.S./I-P) ---0.23-0.38
- Solar Heat Gain Coefficient ---0.17-0.38
- Visible Transmittance ---0.29-0.49
- Air Leakage(U.S./I-P) ---≤0.3
- Condensation Resistance ---40-60

Price: ☆ ☆ ☆

Hardware: German Luxury Brand SOBINCO

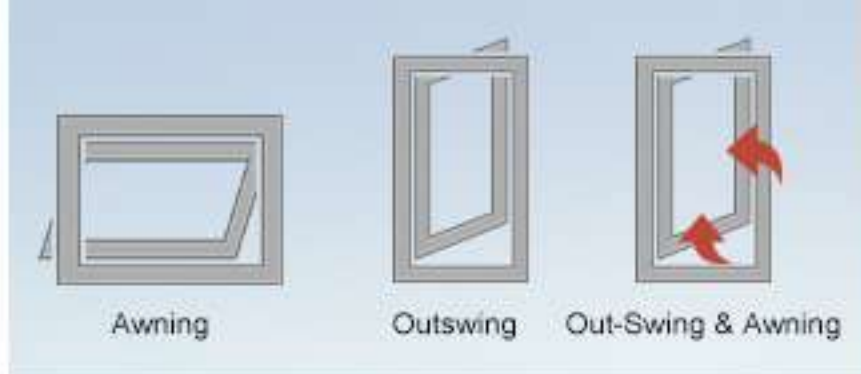
Handle: German Luxury Brand FSB

Upgrade Option: German Luxury Brand SOBINCO Hardware and Handle

Open Type: Tilt and Turn/Inswing/Hopper/Minor Ventilation

Key Point: Flush, Aesthetically Pleasing Design, Energy Efficient

***Optional cavity perfusion and insulation cotton double upgrade the heat insulation performance



Architect Push Out Series

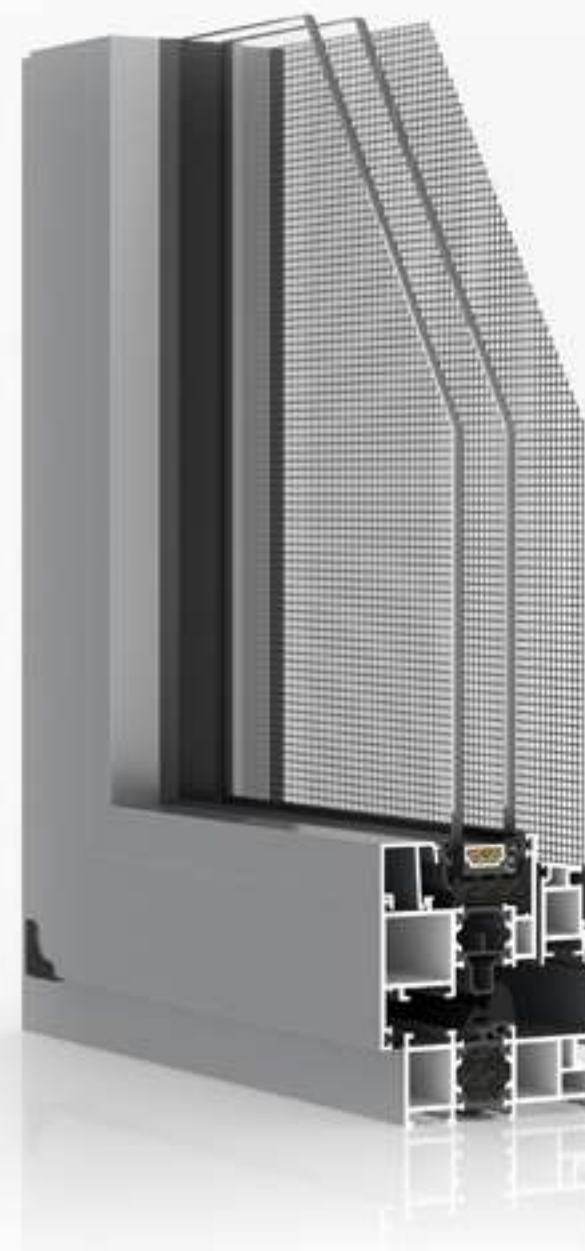


- Glass:** Fully Tempered
Triple Glazing (5+18A+5)
Energy Efficient Low-E Coating
- Profile:** High Strength 6060-T66
- Normal Thickness of Supportive Profile:** 1.8~2.2mm
- Thermal Break:** PA66 GF25 24mm
- Gasket:** German Brand SEMPERIT
- Energy Performance Ratings:**
- U-Factor(U.S./I-P) ---0.23-0.38
 - Solar Heat Gain Coefficient ---0.17-0.38
 - Visible Transmittance ---0.29-0.49
 - Air Leakage(U.S.1/I-P) ---≤0.3
 - Condensation Resistance ---40-60
- Price:** ☆ ☆ ☆ ☆
- Hardware:** German Excellent Brand ROTO
- Handle:** German Excellent Brand HOPPE
- Upgrade Option:** German Luxury Brand SOBINCO Hardware and Handle
- Open Type:** Out-Swing/Awning/Out-Swing & Awning
- Key Point:** Economy, Durability, Energy Efficient

***Optional cavity perfusion and insulation cotton double upgrade the heat insulation performance



Master Plus Lite



- Glass:** Fully Tempered
Triple Glazing (5+18A+5)
Energy Efficient Low-E Coating
- Profile:** High Strength 6060-T66
- Normal Thickness of Supportive Profile:** 1.8~2.2mm
- Thermal Break:** PA66 GF25 24mm
- Gasket:** German Brand SEMPERIT
- Energy Performance Ratings:**
- U-Factor(U.S./I-P) ---0.23-0.38
 - Solar Heat Gain Coefficient ---0.17-0.38
 - Visible Transmittance ---0.29-0.49
 - Air Leakage(U.S.1/I-P) ---≤0.3
 - Condensation Resistance ---40-60
- Price:** ☆ ☆ ☆
- Hardware:** German Luxury Brand SOBINCO
- Handle:** German Luxury Brand FSB
- Upgrade Option:** German Luxury Brand SOBINCO Hardware and Handle
- Open Type:** Tilt and Turn/Inswing/Hopper
- Key Point:** Economy, Durability, Energy Efficient, Anti-Mosquito

***Optional cavity perfusion and insulation cotton double upgrade the heat insulation performance



Architect Plus Series

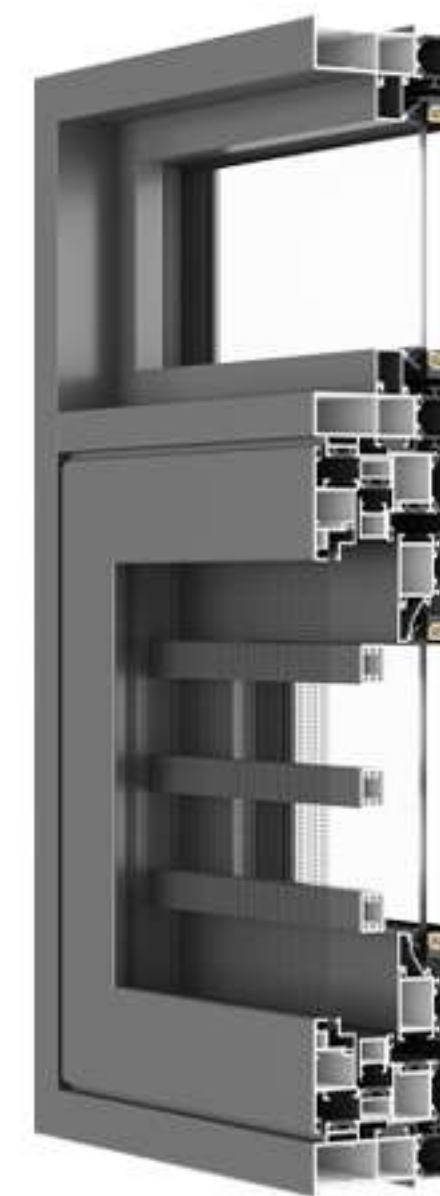


- Glass:** Fully Tempered
Triple Glazing (5+18A+5)
Energy Efficient Low-E Coating
- Profile:** High Strength 6060-T66
- Normal Thickness of Supportive Profile:** 1.8~2.2mm
- Thermal Break:** PA66 GF25 24mm
- Gasket:** German Brand SEMPERIT
- Energy Performance Ratings:**
- U-Factor(U.S./I-P) ---0.23-0.38
 - Solar Heat Gain Coefficient ---0.17-0.38
 - Visible Transmittance ---0.29-0.49
 - Air Leakage(U.S.1/I-P) ---≤0.3
 - Condensation Resistance ---40-60
- Price:** ☆ ☆ ☆ ☆
- Hardware:** German Excellent Brand ROTO
- Handle:** German Luxury Brand FSB
- Upgrade Option:** German Luxury Brand SOBINCO Hardware and Handle
- Open Type:** Tilt and Turn/Inswing/Hopper
- Key Point:** Flush Modern Design, Durability, Energy

***Optional cavity perfusion and insulation cotton double upgrade the heat insulation performance



Master Plus Lite



- Glass:** Fully Tempered
Triple Glazing (5+18A+5)
Energy Efficient Low-E Coating
- Profile:** Highly-Precise 6063-T5
- Normal Thickness of Supportive Profile:** 1.8~2.2mm
- Thermal Break:** PA66 GF25 Frame 24mm, Sash 14.8mm
- Gasket:** China Brand JIANGYIN HAIDA
- Energy Performance Ratings:**
- U-Factor(U.S./I-P) ---0.23-0.38
 - Solar Heat Gain Coefficient ---0.17-0.38
 - Visible Transmittance ---0.29-0.49
 - Air Leakage(U.S.1/I-P) ---≤0.3
 - Condensation Resistance ---40-60
- Price:** ☆ ☆ ☆ ☆
- Hardware:** Wehag
- Handle:** Wehag
- Open Type:** Awning/Out-Swing
- Key Point:** Classic, Economy, Durability, Energy Efficient, Anti-Mosquito

***Optional cavity perfusion and insulation cotton double upgrade the heat insulation performance



Slim Frame Sliding Series



Glass: Fully Tempered

Triple Glazing(5+18A+5)

Energy Efficient Low-E Coating

Profile: Highly-Precise 6063-T5

Normal Thickness of Supportive Profile: 1.4~3.0mm

Thermal Break: PA66 GF25 10-12mm

Gasket: Advanced EPDM Rubber

Energy Performance Ratings:

- U-Factor(U.S./I-P) ---0.23-0.38
- Solar Heat Gain Coefficient ---0.17-0.38
- Visible Transmittance ---0.29-0.49
- Air Leakage(U.S.1/I-P) ---≤0.3
- Condensation Resistance ---40-60

Price: ☆ ☆

Hardware and Handle: WARREN

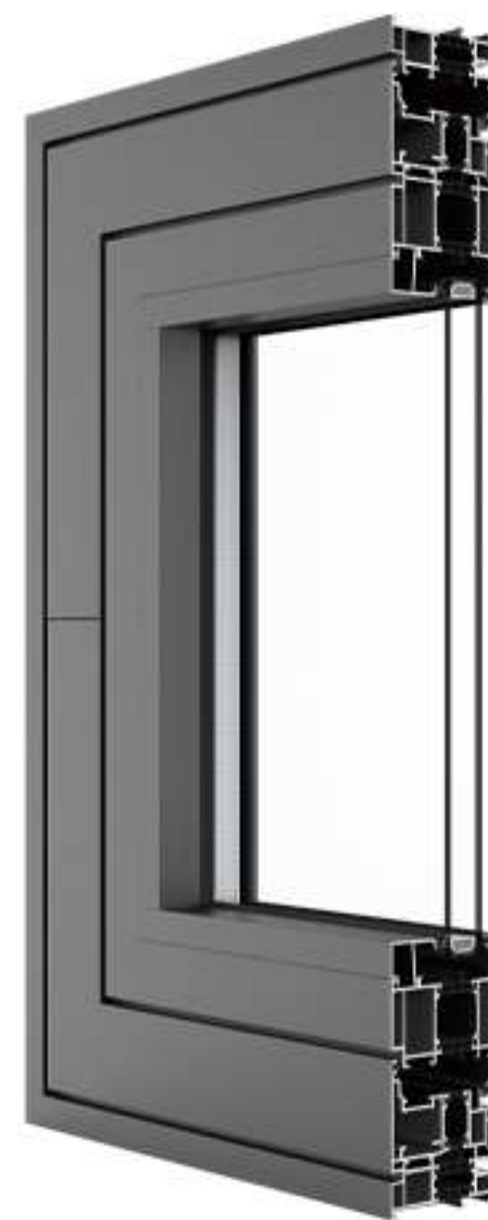
Open Type: Sliding

Key Point: Smooth and Flowing Sliding, Anti-Mosquito

***Optional cavity perfusion and insulation cotton double upgrade the heat insulation performance



Wider View Pivot Series



Glass: Fully Tempered

Triple Glazing(5+18A+5)

Energy Efficient Low-E Coating

Profile: High Strength 6060-T66

Normal Thickness of Supportive Profile: 1.8~2.2mm

Thermal Break: PA66 GF25 30mm

Gasket: China Brand JIANGYIN HAIDA

Energy Performance Ratings:

- U-Factor(U.S./I-P) ---0.23-0.38
- Solar Heat Gain Coefficient ---0.17-0.38
- Visible Transmittance ---0.29-0.49
- Air Leakage(U.S.1/I-P) ---≤0.3
- Condensation Resistance ---40-60

Price: ☆ ☆ ☆ ☆

Hardware and Handle: German Luxury Brand SOBINCO

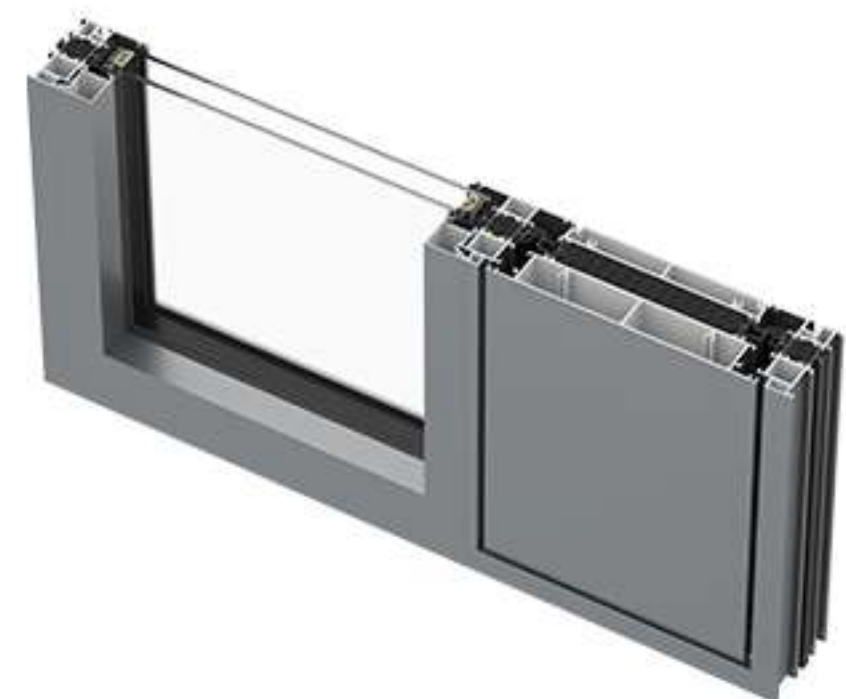
Open Way: Pivot Vertical/Pivot Horizontal

Key Point: Ultra Unobstructed Version--- Add a natural painting to your shop!

***Optional cavity perfusion and insulation cotton double upgrade the heat insulation performance



Wider View Micro Ventilation #A

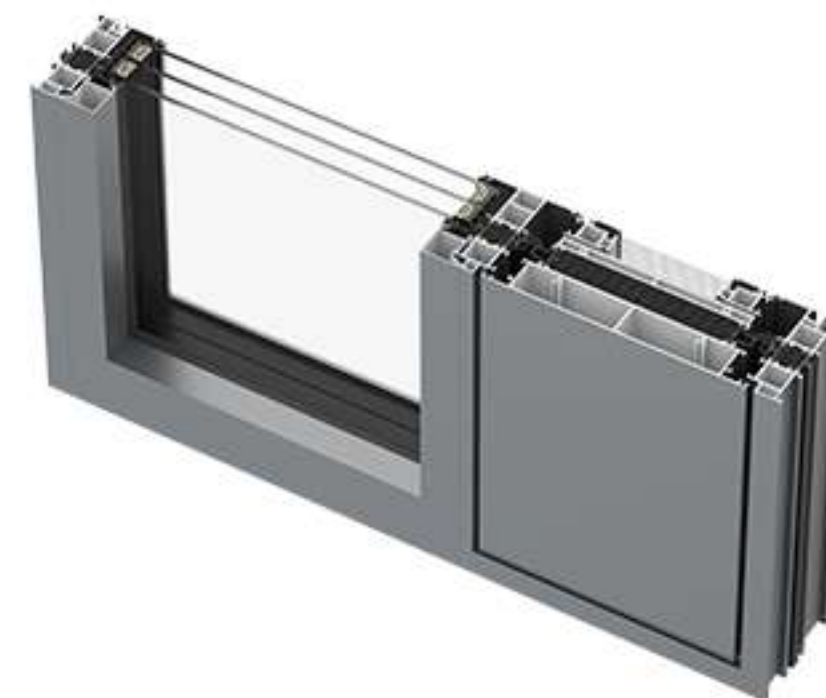


- Glass:** Fully Tempered
Triple Glazing(5+18A+5)
Energy Efficient Low-E Coating
- Profile:** High Strength 6060-T66
- Normal Thickness of Supportive Profile:** 1.8~2.2mm
- Thermal Break:** PA66 GF25 24mm
- Gasket:** German Brand SEMPERIT
- Energy Performance Ratings:**
- U-Factor(U.S./I-P) ---0.23-0.38
 - Solar Heat Gain Coefficient ---0.17-0.38
 - Visible Transmittance ---0.29-0.49
 - Air Leakage(U.S./I-P) ---≤0.3
 - Condensation Resistance ---40-60
- Price:** ☆ ☆ ☆ ☆
- Hardware and Handle:** German Luxury Brand SOBINCO
- Upgrade Option:** German Luxury Brand SOBINCO Hardware and FSB Handle
- Open Way:** Minor Ventilation
- Key Point:** Durability, Energy Efficient, Micro-ventilation, Large View.

***Optional cavity perfusion and insulation cotton double upgrade the heat insulation performance



Wider View Micro Ventilation #C

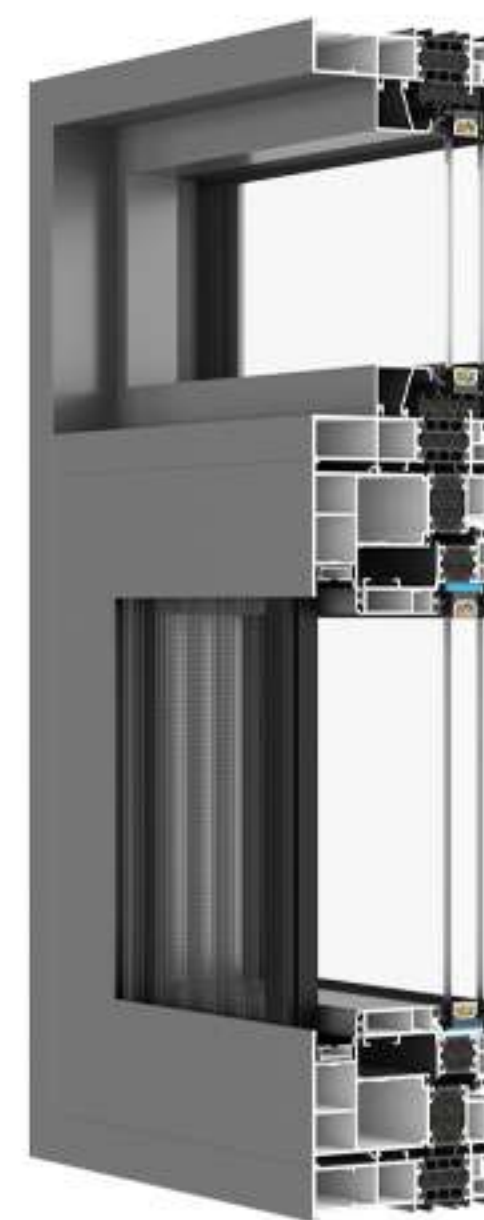


- Glass:** Fully Tempered
Double Glazing(5+12A+5+12A+5)
Energy Efficient Low-E Coating
- Profile:** High Strength 6060-T66
- Normal Thickness of Supportive Profile:** 1.8~2.2mm
- Thermal Break:** PA66 GF25 24mm
- Gasket:** German Brand SEMPERIT
- Energy Performance Ratings:**
- U-Factor(U.S./I-P) ---0.23-0.38
 - Solar Heat Gain Coefficient ---0.17-0.38
 - Visible Transmittance ---0.29-0.49
 - Air Leakage(U.S./I-P) ---≤0.3
 - Condensation Resistance ---40-60
- Price:** ☆ ☆ ☆ ☆
- Hardware and Handle:** German Luxury Brand SOBINCO
- Upgrade Option:** German Luxury Brand SOBINCO Hardware and FSB Handle
- Open Type:** Minor Ventilation
- Key Point:** Durability, Energy Efficient, Micro-ventilation, Large View.

***Optional cavity perfusion and insulation cotton double upgrade the heat insulation performance



Wider View Parallel Series



Glass: Fully Tempered

Double Glazing (5+16A+5) (6 +24A+6)

Energy Efficient Low-E Coating

Profile: High Strength 6060-T66

Normal Thickness of Supportive Profile: 1.8~2.2mm

Thermal Break: PA66 GF25 24mm

Gasket: China Brand JIANGYIN HAIDA

Energy Performance Ratings:

- U-Factor(U.S./I-P) ---0.23-0.38
- Solar Heat Gain Coefficient ---0.17-0.38
- Visible Transmittance ---0.29-0.49
- Air Leakage(U.S.1/I-P) ---≤0.3
- Condensation Resistance ---40-60

Price: ☆ ☆ ☆ ☆

Hardware and Handle: German Luxury Brand SOBINCO

Open Type: Horizontal Push Out

Key Point: Ultra Unobstructed Version. Can be installed with a safety guardrail.

***Optional cavity perfusion and insulation cotton double upgrade the heat insulation performance



Coastal Solution

Experience the ultimate in coastal living with Coastal Window Solutions. Our windows are specially designed to withstand the harsh elements of coastal environments, providing superior protection against water, wind, and salt damage. Our top-quality materials and expert craftsmanship ensure that our windows will last for years, even in the toughest conditions



Master Series



Glass: Fully Tempered

Double Glazing (5+18A+5)

Triple Glazing (5+0.76PVB+5+18A+5)

Energy Efficient Low-E Coating Glass

Profile: High Strength 6060-T66

Normal Thickness of Supportive Profile: 1.8~2.2mm

Thermal Break: PA66 GF25 34mm

Gasket: German Brand SEMPERIT

Energy Performance Ratings:

- U-Factor(U.S./I-P) ---0.23-0.38
- Solar Heat Gain Coefficient ---0.17-0.38
- Visible Transmittance ---0.29-0.49
- Air Leakage(U.S.1/I-P) ---≤0.3
- Condensation Resistance ---40-60

Price: ☆ ☆ ☆

Upgrade Hardware and Handle: German Luxury Brand SOBINCO

Open Type: Tilt and Turn/Inswing/Hopper

Key Point: Classic, Economy, Durability, Energy Efficient, Corrosion Resistance, Hurricane Resistance

***Optional cavity perfusion and insulation cotton double upgrade the heat insulation performance

Architect Series



Glass: Fully Tempered

Double Glazing (5+18A+5)

Triple Glazing (5+0.76PVB+5+18A+5)

Energy Efficient Low-E Coating Glass

Profile: High Strength 6060-T66

Normal Thickness of Supportive Profile: 1.8~2.2mm

Thermal Break: PA66 GF25 24mm

Gasket: German Brand SEMPERIT

Energy Performance Ratings:

- U-Factor(U.S./I-P) ---0.23-0.38
- Solar Heat Gain Coefficient ---0.17-0.38
- Visible Transmittance ---0.29-0.49
- Air Leakage(U.S.1/I-P) ---≤0.3
- Condensation Resistance ---40-60

Price: ☆ ☆ ☆

Upgrade Hardware and Handle: German Luxury Brand SOBINCO

Open Type: Tilt and Turn/Inswing/Hopper

Key Point: Flush, Aesthetically Pleasing Design, Energy Efficient, Corrosion Resistance, Hurricane Resistance

***Optional cavity perfusion and insulation cotton double



Energy Ulmate Series



Glass: Fully Tempered

Double Glazing (5+18A+5)

Triple Glazing (5+0.76PVB+5+18A+5)

Energy Efficient Low-E Coating Glass

Profile: High Strength 6060-T66

Normal Thickness of Supportive Profile: 1.8~2.2mm

Thermal Break: PA66 GF25 44mm

Gasket: German Brand SEMPERIT

Energy Performance Ratings:

- U-Factor(U.S./I-P) ---0.23-0.38
- Solar Heat Gain Coefficient ---0.17-0.38
- Visible Transmittance ---0.29-0.49
- Air Leakage(U.S.1/I-P) ---≤0.3
- Condensation Resistance ---40-60

Price: ☆ ☆ ☆ ☆

Upgrade Hardware and Handle: German Luxury Brand SOBINCO

Open Type: Tilt and Turn/Inswing/Hopper

Key Point: Classic, Economy, Durability, Energy Efficient, Corrosion Resistance, Hurricane Resistance

***Optional cavity perfusion and insulation cotton double upgrade the heat insulation performance



Energy Series



Glass: Fully Tempered

Double Glazing (5+18A+5)

Triple Glazing (5+0.76PVB+5+18A+5)

Energy Efficient Low-E Coating Glass

Profile: High Strength 6060-T66

Normal Thickness of Supportive Profile: 1.8~2.2mm

Thermal Break: PA66 GF25 34mm

Gasket: German Brand SEMPERIT

Energy Performance Ratings:

- U-Factor(U.S./I-P) ---0.23-0.38
- Solar Heat Gain Coefficient ---0.17-0.38
- Visible Transmittance ---0.29-0.49
- Air Leakage(U.S.1/I-P) ---≤0.3
- Condensation Resistance ---40-60

Price: ☆ ☆ ☆ ☆

Upgrade Hardware and Handle: German Luxury Brand SOBINCO

Open Type: Tilt and Turn/Inswing/Hopper

Key Point: Flush, Aesthetically Pleasing Design, Energy Efficient, Corrosion Resistance, Hurricane Resistance

***Optional cavity perfusion and insulation cotton double



Push Out Series

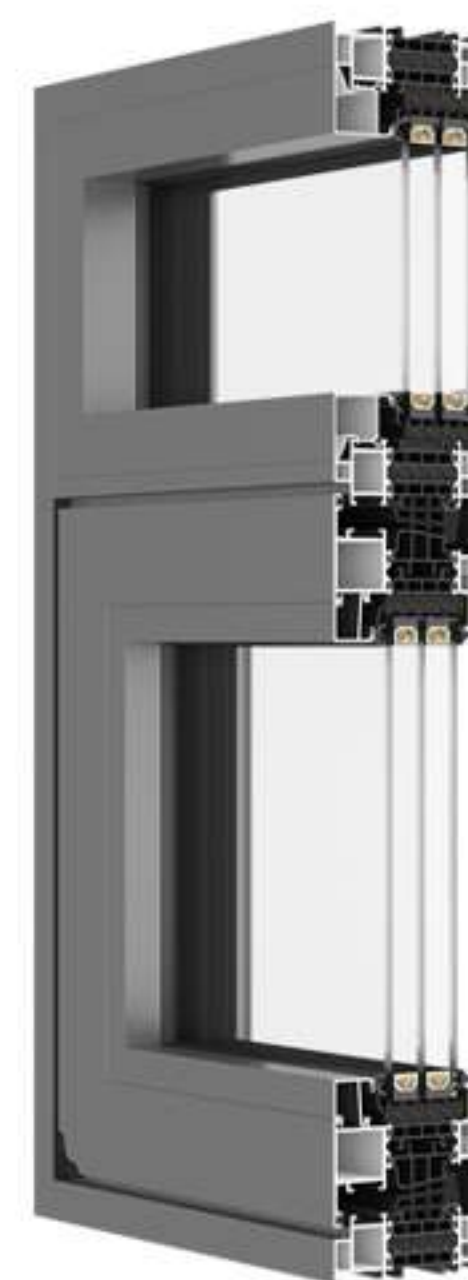


- Glass:** Fully Tempered
 Double Glazing (5+18A+5)
 Triple Glazing (5+0.76PVB+5+18A+5)
 Energy Efficient Low-E Coating Glass
- Profile:** High Strength 6060-T66
Normal Thickness of Supportive Profile: 1.8~2.2mm
Thermal Break: PA66 GF25 34mm
Gasket: German Brand SEMPERIT
- Energy Performance Ratings:**
- U-Factor(U.S./I-P) ---0.23-0.38
 - Solar Heat Gain Coefficient ---0.17-0.38
 - Visible Transmittance ---0.29-0.49
 - Air Leakage(U.S.1/I-P) ---≤0.3
 - Condensation Resistance ---40-60
- Price:** ☆ ☆ ☆
- Upgrade Hardware and Handle:** German Luxury Brand SOBINCO
Open Type: Out-Swing/Awning/ Out-Swing & Awning
Key Point: Classic, Economy, Durability, Energy Efficient, Corrosion Resistance, Hurricane Resistance

***Optional cavity perfusion and insulation cotton double upgrade the heat insulation performance



Passive Series



- Glass:** Fully Tempered
 Double Glazing (5+18A+5)
 Triple Glazing (5+0.76PVB+5+18A+5)
 Energy Efficient Low-E Coating Glass
- Profile:** High Strength 6060-T66
Normal Thickness of Supportive Profile: 1.8~2.2mm
Thermal Break: PA66 GF25 44mm
Gasket: German Brand SEMPERIT
- Energy Performance Ratings:**
- U-Factor(U.S./I-P) ---0.23-0.38
 - Solar Heat Gain Coefficient ---0.17-0.38
 - Visible Transmittance ---0.29-0.49
 - Air Leakage(U.S.1/I-P) ---≤0.3
 - Condensation Resistance ---40-60
- Price:** ☆ ☆ ☆ ☆ ☆
- Upgrade Hardware and Handle:** German Luxury Brand SOBINCO
Upgrade Option: German Luxury Brand SOBINCO Hardware and FSB Handle
Open Type: Out-Swing/Awning/ Out-Swing & Awning
Key Point: Excellent Thermal Insulation, Energy Efficient, Corrosion Resistance, Hurricane Resistance

***Optional cavity perfusion and insulation cotton double



DOOR SYSTEMS

Every opening,
Is a change to meet your heart and nature. Design your space with our high-end custom-built service. Warren represents you with an incomparable lifestyle througharts in windows



Energy Efficient Solution

Enjoy convenient bustling life while remaining close to nature. Manufactured with exquisite workmanship and meticulous spirit. Open your Warren doors to enjoy a lively life and close them whenever you feel like quietness.



Hinged Door



Glass: Fully Tempered

Double Glazing(5+18 A+5)

Energy Efficient Low-E Coating

Profile: High Strength 6060-T66

Normal Thickness of Supportive Profile: 2.2mm

Thermal Break: PA66 GF25 Frame 34mm Sash 30&34mm

Gasket: German Brand SEMPERIT

Energy Performance Ratings:

- U-Factor(U.S./I-P) ---0.28-0.43
- Solar Heat Gain Coefficient ---0.15-0.4
- Visible Transmittance ---0.29-0.49
- Air Leakage(U.S.1/I-P) ---≤0.3
- Condensation Resistance ---42-60

Price: ☆ ☆ ☆

Hardware: German Excellent Brand ROTO + Dr. Hahn Hinges

Handle: German Excellent Brand HOPPE

Upgrade Option: German Luxury Brand SOBINCO Hardware and Handle

Open Type: Inswing/Out-Swing

Key Point: Classic, Anti-Theft Function, Security, Energy Efficient,Durability

***Optional cavity perfusion and insulation cotton double upgrade the heat insulation performance



French Door



Glass: Fully Tempered

Double Glazing(5+18 A+5)

Energy Efficient Low-E Coating

Profile: High Strength 6060-T66

Normal Thickness of Supportive Profile: 2.2mm

Thermal Break: PA66 GF25 Frame 34mm Sash 30&34mm

Gasket: German Brand SEMPERIT

Energy Performance Ratings:

- U-Factor(U.S./I-P) ---0.28-0.43
- Solar Heat Gain Coefficient ---0.15-0.4
- Visible Transmittance ---0.29-0.49
- Air Leakage(U.S.1/I-P) ---≤0.3
- Condensation Resistance ---42-60

Price: ☆ ☆ ☆ ☆

Hardware: German Excellent Brand ROTO + Dr. Hahn Hinges

Handle: German Excellent Brand HOPPE

Upgrade Option: German Luxury Brand SOBINCO Hardware and Handle

Open Type: Inswing/Out-Swing

Key Point: Classic, Anti-Theft Function, Security, Energy Efficient,Durability

***Optional cavity perfusion and insulation cotton double upgrade the heat insulation performance



Hinged Door Plus



- Glass:** Fully Tempered
Double Glazing(5+18 A+5)
Energy Efficient Low-E Coating
- Profile:** High Strength 6060-T66
- Normal Thickness of Supportive Profile:** 2.2mm
- Thermal Break:** PA66 GF25 Frame 34mm Sash 20-24mm
- Gasket:** German Brand SEMPERIT
- Energy Performance Ratings:**
- U-Factor(U.S./I-P) ---0.28-0.43
 - Solar Heat Gain Coefficient ---0.15-0.4
 - Visible Transmittance ---0.29-0.49
 - Air Leakage(U.S.1/I-P) ---≤0.3
 - Condensation Resistance ---42-60
- Price:** ☆ ☆ ☆ ☆
- Hardware:** German Excellent Brand ROTO Hinge
- Handle:** German Excellent Brand FSB
- Open Type:** Two Section Opening/Inswing/Outswing
- Key Point:** Anti-Theft Function, Security, Energy Efficient,Durability, Security

***Optional cavity perfusion and insulation cotton double upgrade the heat insulation performance



Tilt And Turn Door



- Glass:** Fully Tempered
Double Glazing (5+18A+5)
Energy Efficient Low-E Coating
- Profile:** High Strength 6060-T66
- Normal Thickness of Supportive Profile:** 2.2mm
- Thermal Break:** PA66 GF25 Frame 34mm Sash 30&34mm
- Gasket:** German Brand SEMPERIT
- Energy Performance Ratings:**
- U-Factor(U.S./I-P) ---0.28-0.43
 - Solar Heat Gain Coefficient ---0.15-0.4
 - Visible Transmittance ---0.29-0.49
 - Air Leakage(U.S.1/I-P) ---≤0.3
 - Condensation Resistance ---42-60
- Price:** ☆ ☆ ☆ ☆
- Hardware:** German Excellent Brand ROTO Hinges
- Handle:** German Excellent Brand ROTO Hinges
- Open Type:** Tilt and Turn
- Key Point:** Classic, Anti-Theft Function, Security, Energy Efficient,Durability

***Optional cavity perfusion and insulation cotton double upgrade the heat insulation performance

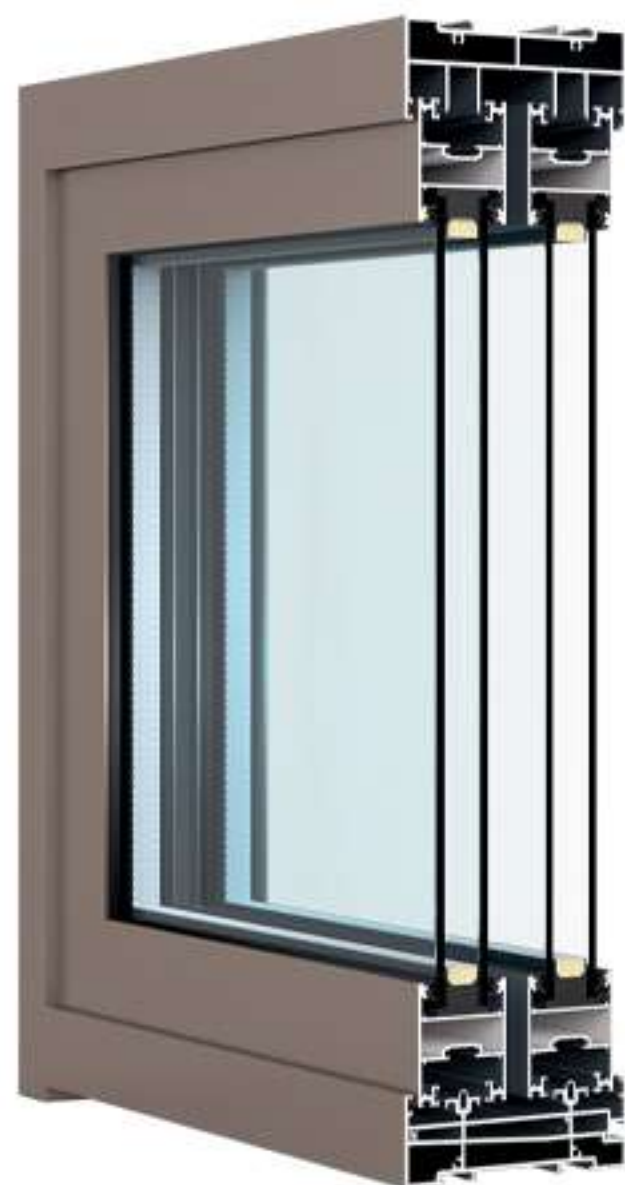


Large Rough Solution

Provide ultra-bright areas to your home. Represent life in a broader way.
Guardian with Warren doors. Feel the pleasure of simplicity.



Narrow Frame Sliding Door



- Glass:** Fully Tempered
Double Glazing(6+19A+6)
Energy Efficient Low-E Coating
- Profile:** High Strength 6063-T5
- Normal Thickness of Supportive Profile:** 1.6~2.2mm
- Gasket:** China Brand JIANGYIN HAIDA
- Energy Performance Ratings:**
- U-Factor(U.S./I-P) ---0.28-0.43
 - Solar Heat Gain Coefficient ---0.15-0.4
 - Visible Transmittance ---0.29-0.49
 - Air Leakage(U.S.1/I-P) ---≤0.3
 - Condensation Resistance ---42-60
- Price:** ☆ ☆
- Hardware and Handle:** Warren
- Open Type:** Double Rails Sliding
- Key Point:** Classic, Economy, Smooth and Flowing Sliding

***Optional cavity perfusion and insulation cotton double upgrade the heat insulation performance



Narrow Frame Sliding Door plus



- Glass:** Fully Tempered
Double Glazing (6+19A+6)
Energy Efficient Low-E Coating
- Profile:** High Strength 6063-T5
- Normal Thickness of Supportive Profile:** 1.6~2.2mm
- Gasket:** German Brand SEMPERIT
- Energy Performance Ratings:**
- U-Factor(U.S./I-P) ---0.28-0.43
 - Solar Heat Gain Coefficient ---0.15-0.4
 - Visible Transmittance ---0.29-0.49
 - Air Leakage(U.S.1/I-P) ---≤0.3
 - Condensation Resistance ---42-60
- Price:** ☆ ☆
- Hardware and Handle:** Warren
- Open Type:** Triple Rails Sliding
- Key Point:** Classic, Economy, Smooth and Flowing Sliding, Anti-Mosquito

***Optional cavity perfusion and insulation cotton double upgrade the heat insulation performance



Slim Lift and Sliding Door



Glass: Fully Tempered

Double Glazing (6+18A +6)

Energy Efficient Low-E Coating

Profile: High Strength 6060-T66

Normal Thickness of Supportive Profile: 2.2mm

Thermal Break: PA66 GF25 Frame 18mm

Gasket: China Brand JIANGYIN HAIDA

Energy Performance Ratings:

- U-Factor(U.S./I-P) ---0.28-0.43
- Solar Heat Gain Coefficient ---0.15-0.4
- Visible Transmittance ---0.29-0.49
- Air Leakage(U.S.1/I-P) ---≤0.3
- Condensation Resistance ---42-60

Price: ☆ ☆ ☆

Hardware and Handle: Warren

Lift and Sliding Hardware: German Luxury Brand SOBINCO

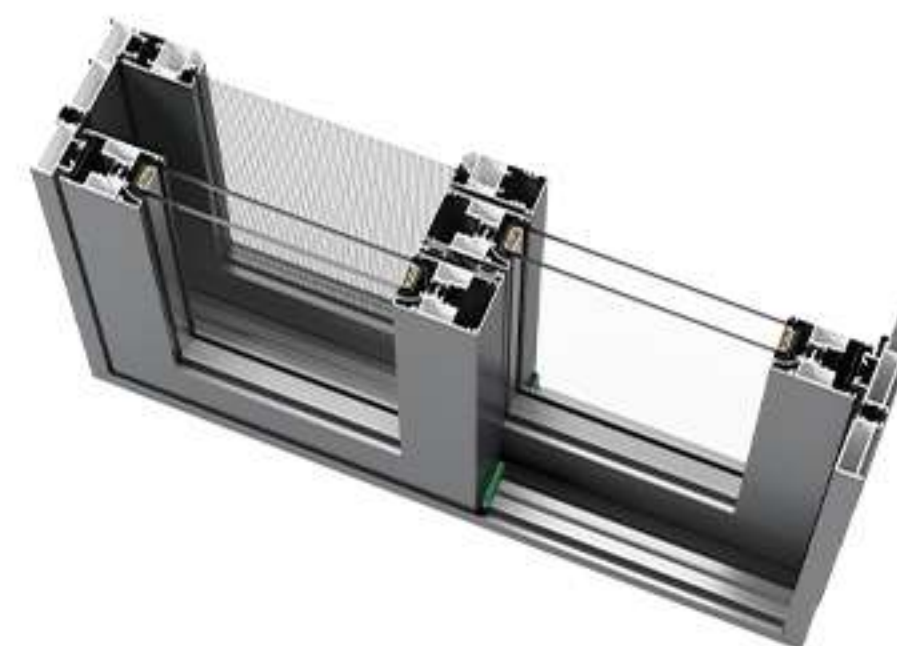
Open Type: Sliding/Lift and Sliding

Key Point: Appealing Look, Amazing View, Smooth and Flowing Sliding, Energy Efficient

***Optional cavity perfusion and insulation cotton double upgrade the heat insulation performance



Slim Lift and Sliding Door Plus



Glass: Fully Tempered

Double Glazing (6+24A+6)

Energy Efficient Low-E Coating

Profile: High Strength 6060-T66

Normal Thickness of Supportive Profile: 2.2mm

Thermal Break: PA66 GF25 18mm

Gasket: China Brand JIANGYIN HAIDA

Energy Performance Ratings:

- U-Factor(U.S./I-P) ---0.28-0.43
- Solar Heat Gain Coefficient ---0.15-0.4
- Visible Transmittance ---0.29-0.49
- Air Leakage(U.S.1/I-P) ---≤0.3
- Condensation Resistance ---42-60

Price: ☆ ☆ ☆ ☆

Hardware and Handle: Warren & CMECH

Lift and Sliding Hardware: German Luxury Brand SOBINCO

Open Type: Sliding/Lift and Sliding

Key Point: Appealing Look, Amazing View, Smooth and Flowing Sliding, Energy Efficient, Anti-Mosquito

***Optional cavity perfusion and insulation cotton double upgrade the heat insulation performance



Energy Lift And Sliding Door



Glass: Fully Tempered

Double Glazing (6+22A+6)

Energy Efficient Low-E Coating

Profile: High Strength 6060-T66

Normal Thickness of Supportive Profile: 2~2.2mm

Thermal Break: PA66 GF25 Frame 34mm Sash 30&34mm

Gasket: China Brand JIANGYIN HAIDA

Energy Performance Ratings:

- U-Factor(U.S./I-P) ---0.28-0.43
- Solar Heat Gain Coefficient ---0.15-0.4
- Visible Transmittance ---0.29-0.49
- Air Leakage(U.S.1/I-P) ---≤0.3
- Condensation Resistance ---42-60

Price: ☆ ☆ ☆ ☆

Hardware and Handle: German Luxury Brand SOBINCO

Open Type: Lift and Sliding/ Tilt and Turn

Key Point: Durability, Energy Efficient, High Performance, Smooth and Flowing Sliding

***Optional cavity perfusion and insulation cotton double upgrade the heat insulation performance



American System Bi-Fold Door



Glass: Fully Tempered

Double Glazing (5+19A+5)

Energy Efficient Low-E Coating

Profile: High Strength 6063-T5

Normal Thickness of Supportive Profile: 2mm

Thermal Break: PA66 GF25 Frame 20mm Sash 24mm

Gasket: China Brand JIANGYIN HAIDA

Energy Performance Ratings:

- U-Factor(U.S./I-P) ---0.28-0.43
- Solar Heat Gain Coefficient ---0.15-0.4
- Visible Transmittance ---0.29-0.49
- Air Leakage(U.S.1/I-P) ---≤0.3
- Condensation Resistance ---42-60

Price: ☆ ☆ ☆

Hardware and Handle: CMECH

Lift and Sliding Hardware: German Luxury Brand SOBINCO

Open Type: Bi-fold

Key Point: Excellent Sealing, Durability, Energy Efficient, Smooth Operation

***Optional cavity perfusion and insulation cotton double upgrade the heat insulation performance

SUNROOM SERIES



Start a good day with Warren sunrooms.

Devoted to continuous investment in innovative research, maintaining leading techniques, Warren sunrooms keep bringing wonderful life experience in different styles and shapes manufactured with exquisite technique.

We mean to excel your expectation by removing your worry with our specially designed watertightness and drainage system.



·Performance Advantages: Warren system sunrooms are applied with thermally-broken aluminum profile and installed with PA66 GF25 multi-cavity sealing strips for the top, providing excellent thermal insulation performance.

·Design Advantages: We precisely calculate the materials and accessories needed for system sunrooms to avoid unnecessary jointing or cutting problem caused by defective designs. We offer flexible designs on the shapes of the top; representing artistic and concise appearances.

·Installation Advantages: Warren system sunrooms are installed with classic Chinese Classic assembly methods that enjoy high stability.

·Drainage Advantages: Warren system sunrooms are equipped with complete drainage systems for the first draining, and the sections of the profiles are designed with drainage structures to allow for the second draining, making sure to flow the rainwater sucked in the sealing strips and interior condensate water to the exterior. There are also dedicated drainage grooves and downspouts on the exterior to provide good water tightness for the sunrooms.

·Supporting Facilities Advantages: Manufactured with European standard grooves and can be perfectly matched system windows and doors, improving the practical use of the sunrooms.

·Smart System Advantages: The windows of Warren sunrooms can be controlled with smart WiFi systems, inviting you to enjoy smart and caring life.

HANDLE



HOPPE® 



Sobinco
OPENS YOUR LIFE



FSB



 Roto



CMECH



wehag
SINCE 1749

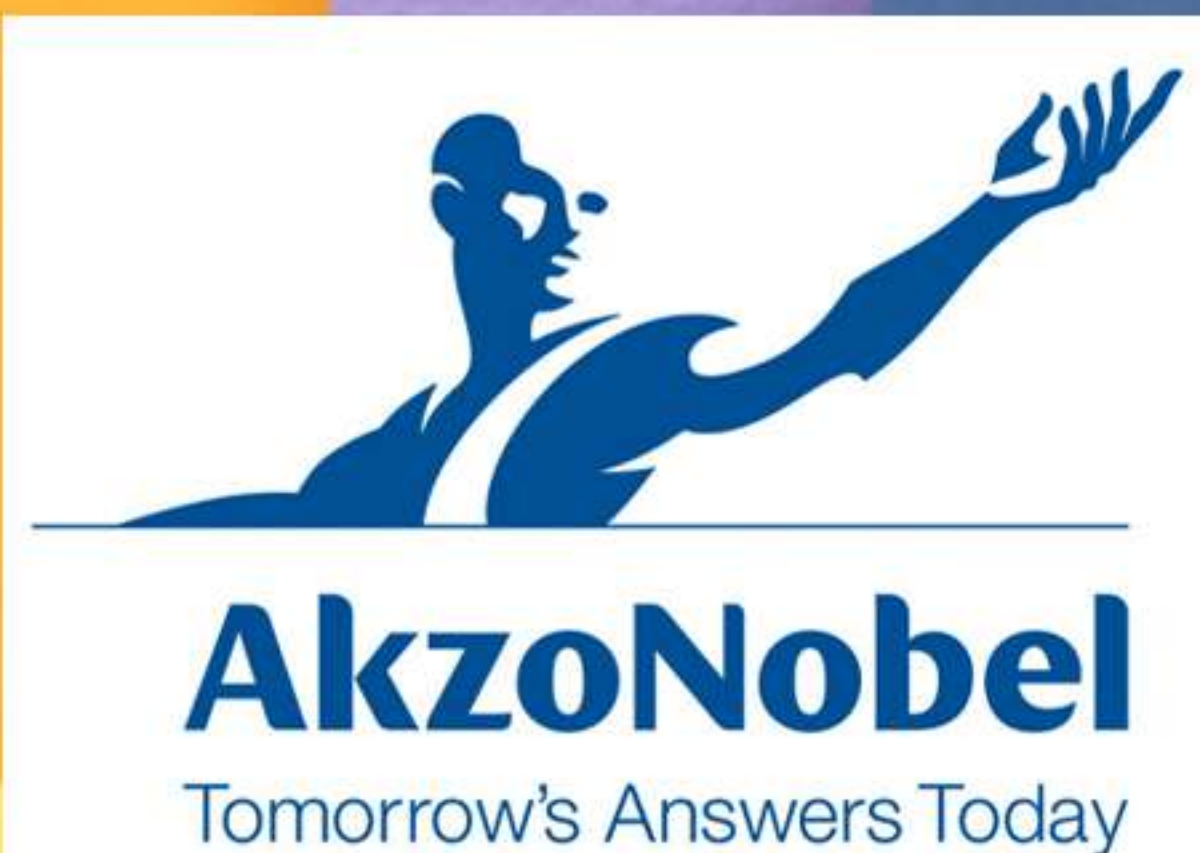


COLOR

**ADD MORE COLOR TO LIFE,
MORE COLORS AVAILABLE**

VARIOUS AND COLORFUL OPTIONS TO CREATE A QUALITY LIFE FOR YOU, WARREN DEVOTES ITSELF TO DESIGNING A COMFORTABLE SUNROOM WITH SAFE POWDER COATING FINISHING. BEING A SAFE GUARDIAN ON YOUR WAY SAILING TO YOUR HAPPINESS.

HOLLAND NKZONOBEL
---FREE REGULAR COLOR



GLORY METALLIC SERIES



Arctic Glacier White



Awakening Roving Gold



Silver Light Yellow



Starlight Meteorite Grey



Magic Night Starry Grey

GLORY METALLIC SERIES



MODERN FLASH SILVER GREY



Starburst Dark Brown



Khaki Dark Brown Gold



Secret Mamba Green



Dark Graphite Black



Light Grey Marble



Elegant Walnut Grain

WARREN FLAT SERIES COLORS



WARREN bright
moon white



Goldfinch Light
Chestnut Brown



Velvet Light Clear Taupe



Pond Dark Green



Serene Lotus Green



Glacial Enamel Gray

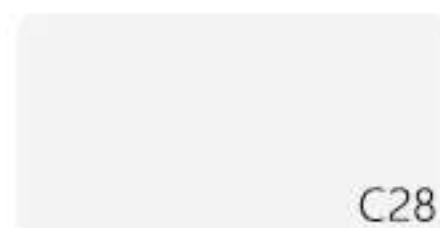


Cool Graphite Gray



Red Pearl Dark Brown

WARREN METAL SERIES



Sand Grain Series



Solemn Silver White



Whale Wave Turquoise Green



Lava Galaxy Grey



Shadow Marble Black



Deep Green Black



Woven Late Autumn Brown



Purple Haze Amber Brown



Corrugated Bronze
Brown



Cragstone Tea
Chestnut Brown



DEEP CHESTNUT
PEARWOOD



JAGGED TEAK WOOD GRAIN



TWISTED WALNUT GRAIN

A close-up photograph of two people in business attire shaking hands. The person on the left is wearing a blue suit jacket, and the person on the right is wearing a dark brown suit jacket. Their hands are clasped in a firm grip. In the background, a wooden desk is visible with a laptop and some papers. The text "PROCUREMENT PROCESS" is overlaid in the lower right quadrant of the image.

PROCUREMENT PROCESS



1.Request A Free Quote



2.Provide Best Solution
within 24 hours



3.Offer Quotation



4.Receive and Confirm Invoice



5.Payment Successful



6.Confirm Design Drawing



7.Production Scheduling



8.Quality Checking and
Testing before Loading



9.Multi-layers of
Packaging protection



10.Loading and On-Time Shipment



11.Installation manuals and videos



12.After Sale Service

INSPECTION,
PACKING
AND DELIVERY

MADE

COMPLETELY AUTOMATIC PRODUCTION LINES

Performance Test Centers for Windows and Doors



LEVEL 12 STORM STIMULATION

To Test the Performances and Lifespans of Windows & Doors
under Extreme Weathers

Test on the Windows & Doors" Performance
Test on Hardware's Durability
Test on Windows & Doors Insulation Performance
Test on the Lifespans of Hinges of Windows & Doors
Test on the Lifespans of Pulley of Windows & Doors
Test on the Physical Performance of Exterior Windows
Follow the Strict National Standard
Respect the Test Data and Care about Practicability

QUALITY INSPECTION



The inspection of QC staff ensures products meet quality standards before they're shipped out.



Careful inspection of every aspect



PACKING AND LOADING



OUR AWARDS AND CERTIFICATE

150+ Product Testing Certificate & Awards

